

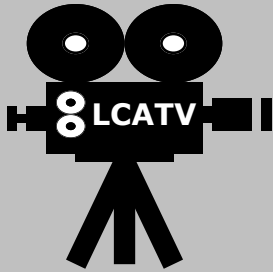
Lake Champlain Access Television



LCATV Headquarters, Prim Road, Colchester, Vermont

***LCATV Annual Report
Fiscal Year 1999/2000
(October 1, 1999-September 30, 2000)***

LAKE CHAMPLAIN ACCESS TELEVISION



FISCAL YEAR 1999/2000 ANNUAL REPORT

OCTOBER 1, 1999-SEPTEMBER 30, 2000

TABLE OF CONTENTS

LCATV BOARD OF DIRECTORS & STAFF	2
PRESIDENT'S REPORT	3
EXECUTIVE DIRECTOR'S REPORT	4
LCATV PROGRAMMING	5
Series Programming	6
LCATV Studio Shows	9
Meeting Broadcasts	10
Election Coverage	11
Events/Sports Broadcasts	12
LCATV BUDGET	15
Operating	16
Capital	17
LCATV INVENTORY	18
Production Equipment	19
Editing/Dubbing Equipment	20
Playback Equipment	20
LCATV VOLUNTEER OF THE YEAR	21
ABOUT LCATV	22

LCATV BOARD OF DIRECTORS

COLCHESTER

Public Access

Mary Simperts, **President**

Governmental Access

Sam Conant, **Vice President**

Educational Access

Roger Moyer

MILTON

Public Access

Open Seat

Governmental Access

Donald Alderman, **Treasurer**

Educational Access

Kary Towne, **Secretary**

GEORGIA

Public Access

Open Seat

Governmental Access

Thomas Neiman

Educational Access

Deb Martin

STAFF

Executive Director

Kevin Christopher

Production Coordinator

Buddy Meilleur

Playback Programmer

Barnabas Rose

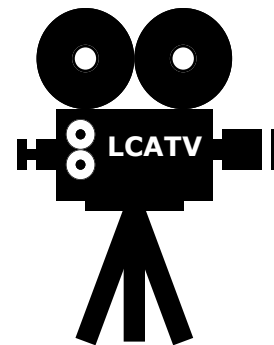
Field Producers

Scott Hamlin

Brent Moody

Tom Moody

Jeremy Jarvis



Lake Champlain

Access Television

354 Prim Road, Suite 3

Colchester, VT 05446

phone (802) 862-5724

fax (802) 864-6635

email lcatv@adelphia.net



PRESIDENT'S REPORT

The title of the song, "Changes, Changes," certainly does describe the whirlwind of activities in Suite 3 at 354 Prim Road during this past year. As you have probably noticed, Channel 2 recently moved on your dial to Channel 15. Very soon Channel 15 will have a sibling who may be found at Channel 16. An abundance of programming materials necessitated the acquisition of additional air time. The report of our Executive Director, Kevin Christopher, will inform you of other changes.

When Channel 2 was being developed by hard-working volunteers a few years ago, it was decided that a "PEG" station would best fit the needs of the area. "PEG" stands for Public, Education and Government. Channel 15 will serve the Public interest unit while Channel 16 will serve the Education and Government units.

Channel 2, or 15 and 16, falls under the heading of Lake Champlain Access Television, or LCATV, and may be found in your telephone book by that name. As a Public Access station, LCATV provides public access television for the communities of Colchester, Georgia and Milton, plus a few viewers in Burlington's "New" North End.

Administrative and Operating costs for your Public Access TV are to be fully subsidized by a contribution provided, by law, from Adelphia Cable Corporation- one of the largest commercial television service providers in the nation. You are also paying for this service through a fee added to your monthly bill from Adelphia. You, our viewers, are welcome to offer suggestions and advice as well as to ask questions. You are welcome to attend our Board Meeting and /or call the station. We are here to serve you.

Your Board of Directors were greatly saddened by the sudden death of a valued member, Rep. Thomas Neiman, a few months ago. Tom was not on the Board for very long before we realized that he had a wealth of knowledge, a warm personality and a great sense of humor. Tom is missed....

The past year was full of challenges and frustrations for our dedicated and talented staff and volunteers. Their ability to deal with complex and, at times, aggravating problems has certainly been appreciated. We couldn't exist without them! Many thanks!

Respectfully submitted,

Mary Simperts, *LCATV Board of Directors President*



EXECUTIVE DIRECTOR'S REPORT

Fiscal Year 1999/2000 has proved to be a time of transition and considerable change for Lake Champlain Access Television. The arrival of a new Channel Director, the signing of our new agreement with Adelphia Communications, the upcoming move from Channel 2 to Channel 15: all of these things are representative of a period of constant evolution for this organization over these twelve months. As the dust clears, I believe we are left with a series of events that speak of unprecedented growth and stabilization for LCATV.

On a personal level, the most significant change was the exit of Channel Director Jessica Wilson and my promotion to the position. It has been a challenging and rewarding experience thus far. The first few months were a crash course in crisis management, but as things calmed and I was able to turn my attention to making improvements and planning for the future, I found in myself and the LCATV staff an enthusiasm and excitement that we hadn't previously know...and one that I believe continues.

After many meetings, phone calls, negotiations, drafts, and letters, the 99-04 Agreement with Adelphia Communications was signed and put into effect. The contract will provide considerable opportunity for LCATV. New technologies, new equipment, a new channel. It was a difficult process, but the tenacity with which LCATV approached the negotiation of this contract points to a commitment to the future of the corporation that can lead to nothing but progress and success.

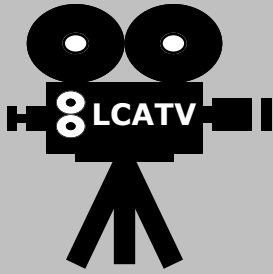
We are looking at the end of an era. As of November 2000, Channel 2 will be no more. A cable system upgrade will move us up to Channel 15. Oddly, the most difficult thing about this has been changing the way in which we answer phones. The staff has been and will continue to be preparing for the channel split, as we become Channel 15 & 16 in early 2001. This will provide a much-needed outlet for our current abundance of programming, as well as a resource for the creation of new programming in the future.

Change, transition, and planning aside, FY 99/00 continued to be about LCATV serving the community. We have more programming than ever and the additions keep coming. Our facilities are in near-constant use by the membership and our amount of locally-produced programming is increasing rapidly. In the past twelve months, LCATV has built upon its reputation as a valuable resource for Colchester, Milton, and Georgia, as a forum for the exchange of information and views, and as a place of teaching and learning. I think that we will continue this well into the future.

Respectfully submitted,

Kevin Christopher, *LCATV Executive Director*
October, 2000

LAKE CHAMPLAIN ACCESS TELEVISION



FISCAL YEAR 1999/2000 ANNUAL REPORT

OCTOBER 1, 1999-SEPTEMBER 30, 2000

LCATV PROGRAMMING

**SERIES PROGRAMMING
LCATV STUDIO SHOWS
MEETING BROADCASTS
ELECTION COVERAGE
EVENTS/SPORTS BROADCASTS**

The total number of air times for the following programming represents the program's airings between January 1 and September 30, 2000.

In the notations for Program Type:

Pub.= public access

Edu.= educational access

Gov.= governmental access

SERIES PROGRAMMING

PROGRAM TITLE	TYPE	FREQUENCY	PRODUCER	SPONSOR	TIMES AIRED
Around the Kitchen Table	Pub.	Weekly	Judi R. Button	Buddy Meilleur	59
The Artful Word	Pub.	Weekly	James Gero	Chris Abair	121
Bible Comment	Pub.	Weekly	Tom Moody	n/a	252
Bible Forum	Pub.	Weekly	Tom Moody	n/a	217
The Cherie & Yolanda Show	Pub.	Bimonthly	Steven West	Candy Peate	146
Colchester Football Now	Pub.	Monthly	Michael O'Hara	n/a	33
The Davey Horror Show	Pub.	Monthly	Dave Parietti	Jme Wheeler	146
The Edge	Pub.	Monthly	Derek Beam	n/a	93
Educational Programs Compilation	Edu.	Occasional	LCATV	n/a	41
Electric Connections	Pub.	Monthly	Steve Costello	Meeri Zetterstrom	116
Govenor's Press Conference	Gov.	Weekly	CCTV	n/a	111



SERIES PROGRAMMING (CONT.)

PROGRAM TITLE	TYPE	FREQUENCY	PRODUCER	SPONSOR	TIMES AIRED
Green Mountain Mature News	Pub.	Monthly	Chester Hickok	Mary Simperts	118
Holy Cross Children's Mass	Pub.	Monthly	Pete Monty	n/a	142
Lifelines	Pub.	Monthly	Ethel Brousseau	n/a	144
Living Bread	Pub.	Weekly	Randy Bunch	n/a	142
The Mass/Journey/Religion Report	Pub.	Weekly	Maria Hazen	Gloria Gibson	196
Messages from Jesus	Pub.	Monthly	Gordon Gaynon	James B. Gaynon	142
Mind's Eye View	Pub.	Monthly	Loren Tindall	n/a	116
News & Views from the VT Statehouse	Gov.	Monthly	Virginia Renfrew	Carol Buchdahl	83
Peace & Justice Review	Pub.	Weekly	Ed Everts	Lea Terhune	135
Point/Counterpoint	Gov.	Monthly	CCTV	n/a	52



SERIES PROGRAMMING (CONT.)

PROGRAM TITLE	TYPE	FREQUENCY	PRODUCER	SPONSOR	TIMES AIRED
Prim Road Sessions	Pub.	Monthly	Kevin Christopher	n/a	191
The Prophetic Word	Pub.	Weekly	Monica Richards	Nancy Stringer	142
Shorts Spot	Pub.	Monthly	Barnabas Rose	n/a	159
Storytime	Edu.	Weekly	LCATV	n/a	92
Storytime Compilation	Edu.	Occasional	LCATV	n/a	42
Street Signs	Pub.	Monthly	Brian Klig	Laura Bowe	115
Struggles of the Spirit	Pub.	Weekly	C. Leland Udell	Monica Rock	115
Survey Says!	Pub.	Monthly	James Polli	n/a	118
Vermont Rainbow Connection	Pub.	Monthly	Sharon Randall	Robin Seaman	141
Vermont Republican Weekly	Gov.	Weekly	Marty Searlight	Inge Schaefer	140
Vision Talk	Pub.	Monthly	Michael Richmond	Erin K. Bessy	122



LCA TV STUDIO SHOWS

PROGRAM TITLE	TYPE	PRODUCER/HOST	FREQUENCY	LENGTH	TIMES AIRED
Congressional Connection	Gov.	Inge Schaefer	Monthly	30 min.	74
Women of Colchester	Pub.	Inge Schaefer	Monthly	30 min.	14
Colchester Worldwide	Pub.	Inge & Hank Schaefer	Monthly	30 min.	59
Around Government/Around Colchester	Gov.	Mitch Berkowitz	Monthly	30 min.	58
Community Roundtable	Pub./Gov.	Sam Conant	Weekly	60 min.	125
School Talk	Edu.	Michelle Penca	Monthly	30 min.	116



MEETING BROADCASTS

MEETING TITLE	PRODUCER	TYPE	FREQUENCY	TIMES AIRED
Colchester Planning Commission	LCATV	Gov.	Occasional	1
Colchester School Board	LCATV	Edu.	Bimonthly	99
Colchester Select Board	CCTV	Gov.	Bimonthly	81
Colchester Town Meeting	LCATV	Gov.	Once	3
Georgia School Board	LCATV	Edu.	Bimonthly	69
Georgia Select Board	LCATV	Gov.	Bimonthly	95
Georgia Town Meeting	LCATV	Gov.	Once	4
Milton Planning Board	LCATV	Gov.	Occasional	6
Milton School Board	LCATV	Edu.	Bimonthly	97
Milton Select Board	LCATV	Gov.	Bimonthly	67
Milton Select Board Forum	LCATV	Gov.	Bimonthly	16
Milton Town Meeting Highlights	LCATV	Gov.	Once	3
Rt. 7 Corridor	LCATV	Gov.	Once	3
Rt. 127 Corridor	LCATV	Gov.	Once	6



ELECTION COVERAGE

PROGRAM TITLE	PRODUCER	TYPE	TIMES AIRED
Colchester Select Board Budget Presentation	LCATV	Gov.	12
Colchester Select Board Candidate Forum	LCATV	Gov.	12
Colchester School Board Candidate Forum	LCATV	Edu.	9
Colchester School Board Budget Presentation	LCATV	Edu.	9
Georgia School Board Candidate Forum	LCATV	Edu.	7
Georgia School Budget Presentation	LCATV	Edu.	7
Milton School Budget Presentation	LCATV	Edu.	6
Milton School Board Candidate Forum	LCATV	Edu.	8
Milton Select Board Candidate Forum	LCATV	Gov.	8
LCATV Live Election Coverage	LCATV	Gov./Edu.	1
Gubernatorial Debate	CCTV	Gov.	3



EVENTS/SPORTS BROADCASTS

PROGRAM TITLE	TYPE	TIMES AIRED
Colchester High School Mock U.N.	Edu.	10
Clean Boats	Pub.	10
Colchester Middle School Graduation	Edu.	18
Colchester Choral Concert	Pub.	3
Colchester Community Chorus	Pub.	11
Folk Festival	Pub.	3
Foster Grandparents	Pub.	5
Georgia Mock Trial	Pub.	14
UVM Hockey	Pub.	43
Housing & Community	Gov.	8

PROGRAM TITLE	TYPE	TIMES AIRED
Veteran's Day Observance	Pub.	4
Large Farm Operations	Pub.	7
Larry Messier Tribute	Pub.	30
Little Women	Pub.	11
Memorial Day Parade	Pub.	14
Milton High School Graduation	Pub.	19
Milton Middle School Graduation	Pub.	19
On the Road	Pub.	7
Milton School Budget Update	Edu.	4
Rails to Trails	Pub.	7



EVENTS/SPORTS BROADCASTS (CONT.)

PROGRAM TITLE	TYPE	TIMES AIRED
Georgia Recognition Assembly	Edu.	7
RETN Newsroom	Edu.	17
Rhoda Berenson speaks	Gov.	3
Rick Hubbard speaks	Gov.	4
Roads Scholars	Edu.	18
Rope	Pub.	2
Ruth Dwyer Rally	Gov.	13
Scholars Bowl	Edu.	15
Sierra Club	Pub.	22
Songwriter's Notebook	Pub.	36

PROGRAM TITLE	TYPE	TIMES AIRED
Milton Spirit Night	Pub.	13
Georgia Elementary Swing Dance	Pub.	6
Tobacco Task Force	Pub.	5
Tri-County	Gov.	7
Union Memorial Open House	Edu.	10
UVM Hazing Hearing	Pub.	14
VT Business Roundtable	Pub.	4
Vermonters Remembered	Pub.	5
V.S.O. On-Stage	Pub.	58
V.S.O. Concert	Pub.	16



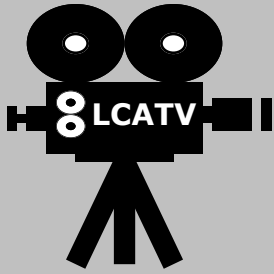
EVENTS/SPORTS BROADCASTS (CONT.)

PROGRAM TITLE	TYPE	TIMES AIRED
Vermont Women's Fund	Pub.	31
Wood's Tea Company	Pub.	4
Colchester High School Football	Pub.	35
Milton Rock Show	Pub.	12
Red Cross Blood Drive	Pub.	19
Communities & Colleges	Gov.	20
Georgia Grade 3 & 4 Academic Fair	Edu.	19
40th Army Band Concert	Pub.	10
4th of July Parade	Pub.	27
Agent Orange Seminar	Pub.	27

PROGRAM TITLE	TYPE	TIMES AIRED
Colchester Archeological Dig	Pub.	26
Basketball - Colchester vs. Essex	Pub.	13
Causeway Bike Ferry	Pub.	54
Blast From The Past	Pub.	15
Burlington 2000	Pub.	7
Celebrity Lockup	Pub.	25
Colchester High School Graduation	Pub.	20



LAKE CHAMPLAIN ACCESS TELEVISION



FISCAL YEAR 1999/2000 ANNUAL REPORT

OCTOBER 1, 1999-SEPTEMBER 30, 2000

LCATV BUDGET

**OPERATING BUDGET
CAPITAL BUDGET**



LCATV BUDGET- OPERATING

Operating Expenses

	BUDGET	ACTUAL
Compensation	\$54,831.00	\$46,927.76
Employer FICA Expense	4,400.00	3,489.70
Unemployment Taxes	0.00	1,744.99
Health Insurance	2,400.00	4,543.33
Contractors Fees	0.00	2,358.00
Business Insurance	3,000.00	2,097.04
Bank Fees	0.00	186.69
Accounting Fees	3,000.00	2,176.00
Legal Fees	4,000.00	3,318.00
Office Rent	9,300.00	9,300.00
Telephone Expense	2,500.00	2,092.40
Utilities	2,400.00	2,126.08
Internet Access Fees	239.40	239.40
Office Supplies	1,000.00	1,269.07
Dues & Subscriptions	500.00	537.65
Postage	360.00	281.84
Advertising	1,000.00	0.00
Meals & Entertainment	100.00	44.23
Travel	750.00	771.69
Interest Expense	0.00	23.59
Contributions	0.00	71.00
Printing & Copying	1,600.00	0.00
Discretionary	1,000.00	0.00
<hr/>		
<i>Total Operating Expenses</i>	\$91,480.40	\$83,598.42

Operating Revenue

Operating Agreement	\$73,686.72
Dubbing Income	1,152.00
Interest Income	46.22
Other Income	2,775.70
<hr/>	
<i>Total Operating Revenue</i>	\$77,660.64



LCATV BUDGET- CAPITAL

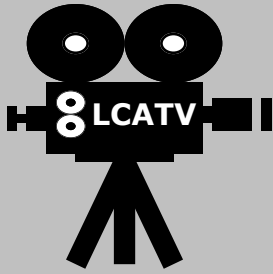
Capital Expenses

	BUDGET	ACTUAL
Maintenance & Repairs	\$1,000.00	\$3,014.75
Technical Supplies	0.00	232.70
Videotapes 1,153.84	2,000.00	
Depreciation Expense 5,857.49	0.00	
<i>Total Capital Expenses</i>	\$3,000.00	\$10,258.78

Capital Revenue

Operating Agreement	\$10,000.00
<i>Total Capital Revenue</i>	\$10,000.00

LAKE CHAMPLAIN ACCESS TELEVISION



FISCAL YEAR 1999/2000 ANNUAL REPORT

OCTOBER 1, 1999-SEPTEMBER 30, 2000

LCATV INVENTORY

**PRODUCTION EQUIPMENT
EDITING/DUBBING EQUIPMENT
PLAYBACK EQUIPMENT**



PRODUCTION EQUIPMENT

<u>QTY</u>	<u>ITEM</u>
2	Panasonic VHS Camera
2	Panasonic S-VHS Camera
4	Bogen Camera Tripod
1	Videonic Digital Video Mixer
6	Sure Lavalier Microphone
4	Sure Audio Mixer
6	Telex Handheld Microphone
2	Spirit Folio Audio Mixer
34	Micophone Cable
8	Tabletop Microphone Stand
2	Audiotechnica Shotgun Microphone
5	Floor Microphone Stand
2	Lowel Tota Light
4	Lowel Studio Light
3	Barndoors
3	Panasonic Color Video Monitor
1	Computer Tower
1	ADI Color Computer Monitor
1	Digital Computer Keyboard
1	Logitech Computer Mouse
1	Radio Shack Speaker Phone Ampliphier
1	Regency Cable Converter Box
1	Goldstar TV-VCR Combo
1	Sony Digital Mavica Camera
3	Canvas Gear Bags
4	Radio Shack Voice Operated Communicators
1	Light Bar



EDITING/DUBBING EQUIPMENT

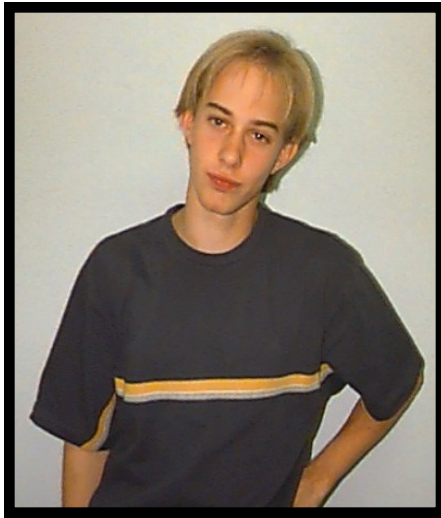
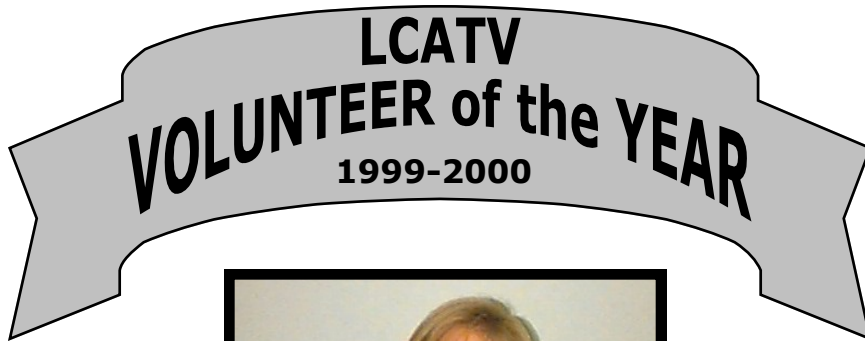
<u>QTY</u>	<u>ITEM</u>
1	JVC Editing Control Unit
2	JVC Editing Recorder
1	Sure Audio Receiver
2	Panasonic Color Video Monitor
4	Panasonic VCR
1	Panasonic VCP

PLAYBACK EQUIPMENT

<u>QTY</u>	<u>ITEM</u>
1	Den Digital Time Base Corrector
1	Scott Stereo Receiver
1	Leightronix Event Controller
1	Olsen Technology Reverse Modulator
1	Scientific-Atlanta Reverse Modulator
1	ADC Video Patch Bay
1	ADC Audio Patch Bay
1	Leitch Video Distribution Amplifier
1	Sony Color Video Monitor
1	Information Masters Computer Tower
1	Leading Edge Color Monitor
1	Logitech Delux 104 Keyboard
1	Logitech Computer Mouse
9	Panasonic VCR
1	MGA VCR
1	Sony 3/4" Player



Each year, LCATV acknowledges a community volunteer for their outstanding commitment to this station and to access television...



JEREMY JARVIS

Currently a LCATV Field Producer and senior at Colchester High School, Jeremy has worked with the station for several years. Among his credits are a documentary on the area's preparations for Y2K and numerous contributions to the program *CHS Now*. Jeremy plans to enter college in the fall and study film production.



ABOUT LCATV

Lake Champlain Access Television is public, education and government access television for the communities of Colchester, Milton and Georgia, Vermont. LCATV exists to give members of these communities the resources to create and utilize a televised public forum. Our equipment, air time and knowledge is available to all of our membership so that they may produce and/or present original access programming on this station. For information about training and volunteer opportunities, interested parties should call the Executive Director at 862-5724.

NUMBER OF SUBSCRIBERS

LCATV currently reaches the following number of households* in its member communities:

COLCHESTER- 4427

MILTON- 2490

GEORGIA- 846

*figures as of 10/31/00 courtesy of Adelphia Communications

LCATV BOARD OF DIRECTORS

LCATV currently has three vacancies on its Board of Directors: the Public Access seats in the communities of Milton and Georgia and the Government Access seat in Georgia. Anyone interested in running for or being appointed to these seats can contact the Executive Director at 862-5724. The LCATV Board meets monthly at headquarters on Prim Road in Colchester.

The Lake Champlain Access Television 1999/2000 Annual Report was prepared by Kevin Christopher, Buddy Meilleur, Patricia Braine, and Barnabas Rose.